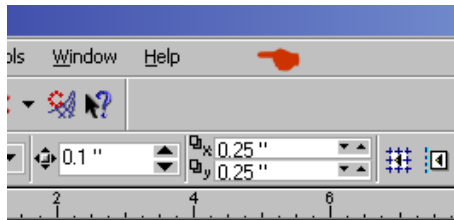


Installing the Work Space Manually

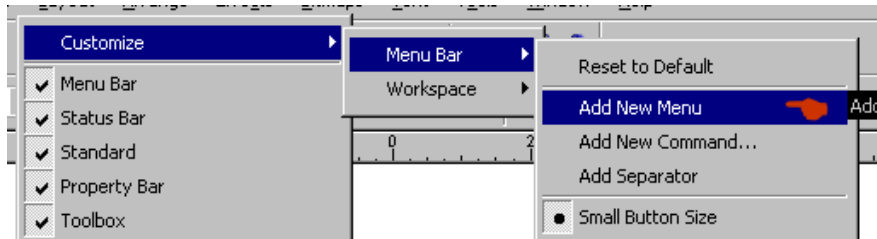


Under certain circumstances the EngravePro setup is unable to install the workspace for you automatically. Following the instructions below will install the EngravePro menu and the menu items.

1. Start CorelDRAW and open a new document.
2. Right click on an empty area of the menu bar as shown in the picture.

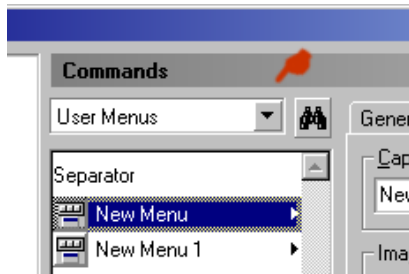


3. When the popup menu appears, select **Customize, Menu Bar**, and finally **Add New Menu**.

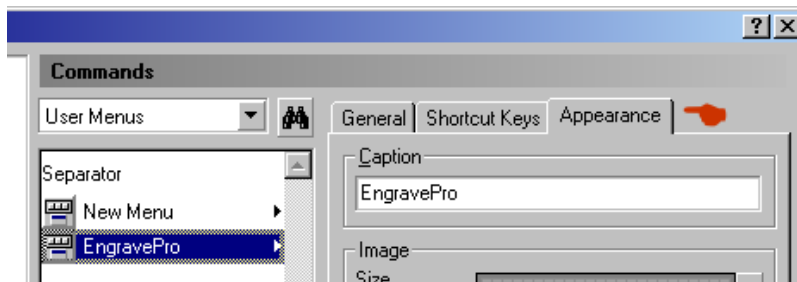


You will then have a menu item on your menu bar labeled, **New Menu** followed by a number.

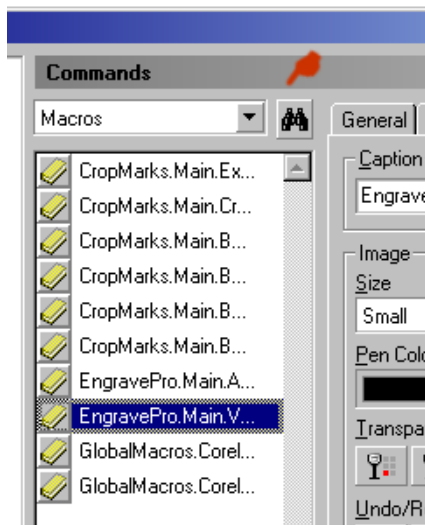
4. In CorelDRAW, select the **Tools** Menu then click Customization. Highlight the **Commands** label in the left hand pane.
5. Now select **User Menus** from the pull down box. You will then see your New Menu Item in the list below the pull down box.



6. Highlight your new menu item, and then click the **Appearance** tab.



7. In the caption text editing box change the name of your menu to EngravePro. Now we can add some commands to the new menu.
8. Once again click the pull down box and select **Macros** from the list. Now you will see a list of available macro functions you can add to your menu.



9. Click the first macro that starts with **EngravePro**. Notice that you will see the full name of the macro in the text-editing box to the right. Place your cursor in the text editing box and delete **EngravePro.Main** leaving only the program name. In this example you should be left with “Variable Text”. If the macro you selected didn’t have **Variable Text** in the caption then select the other EngravePro macros until it does. Repeat this for the other two EngravePro macros.
10. Now back in the box to the left where the macros are, click and hold down your mouse button on the graphic of the first EngravePro macro. While holding down the mouse button drag the macro over your New Engrave Pro menu. Notice when you hover over the menu, it drops down. When a black horizontal line appears, drop your macro. Repeat this for the other two EngravePro Macros.

